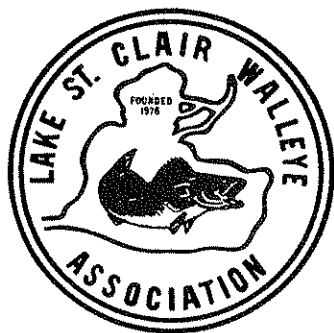


YOUR DUES EXPIRE AT THE END OF THIS MONTH



PRINTED ON RECYCLED PAPER

OFFICIAL NEWSPAPER OF THE LAKE ST. CLAIR WALLEYE ASSOCIATION



WALLEYE WORLD

DEDICATED TO THE PRESERVATION OF MICHIGAN'S WALLEYE FISHERY

APRIL, 2007

<http://www.lakestclairwalleyeassociation.com>

UPPER DETROIT RIVER AND ST. JEAN RAMPS

by Alex Vitek

The April and May bite on the upper Detroit River is phenomenal. It seems like anyone and everyone can go out and catch at least one large Walleye using their favorite method. The fishing is so great that we find articles in the major newspapers on all the fishermen on the river.

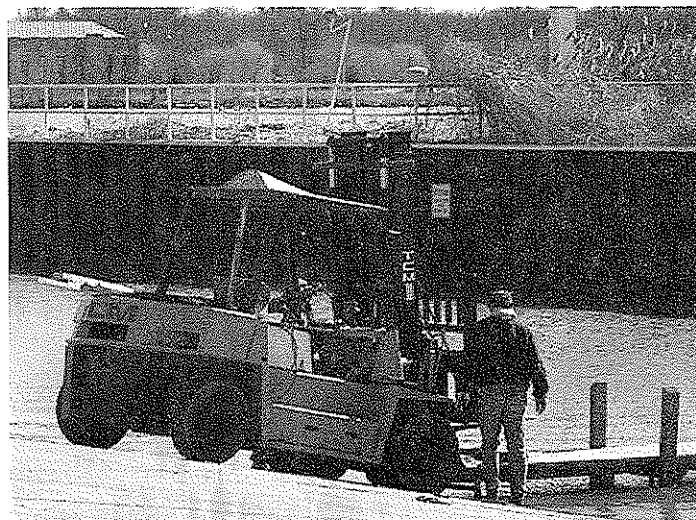
On Sunday, May 6th the Lake St. Clair Walleye Association will be at the St. Jean Ramps to conduct a combination "open to the public" weigh-in, a club promotion, and a promotion for the St. Jean ramps (Harbor Hill Marina) and the upper Detroit River. Anyone who has not visited the area will be surprised on how much new development is taking place. Even the "two brothers smokestacks" and the power plant look like they have been rebuilt.

As the fishing party returns from a day on the river and puts their boat back on the trailer they will find the club at the top of the ramp. From 10:00 am until 4:00 pm the club will have the table and scale and "leader-board" set up; just like for one of our monthly membership derbies and we will be weighing in at least one fish for each adult and child. No registration required but just launch the boat and go out on the river and have a good time. Then, before you leave, stop by and see the Walleye Association.

This fun filled event is open to all club members and to the general public who launch at St. Jean. We will

have coffee, water and some soft drinks available. We will weigh the fish, we will measure the fish, we will give out weigh slips, and we will have some prizes that are being donated for this event.

Volunteers are needed and club members can show up for any shift they want. Contact us at the Membership Table at the meeting in April or call the club phone and let us know how to contact you. Anyone who wants to donate a prize or otherwise help with this club and upper river promotion should contact us.



The crew started working on the new docks at the St. Jean ramps in the beginning of April.

**LAKE ST. CLAIR WALLEYE ASSOCIATION
EXECUTIVE BOARD**

President ~ Jeff Regulski
 Vice President ~ Dave Wilemski
 Financial Secretary ~ Jim Burgess
 Recording Secretary ~ Marshall Baker
 Membership Secretary ~ Alex Vitek

BOARD OF DIRECTORS

Don Murray (08)	Mark King (07)
Richard Bevins (08)	Joe Fettue (07)
Bob Barnes (08)	Steve Beasley (07)
Keith Krych(08)	Bob Gavin (07)
Mark Tews (08)	Dave Marcelewski (07)

ALTERNATES

Joe Gentz, Richard Gentz,
 Dave Champine, Larry Osmulski

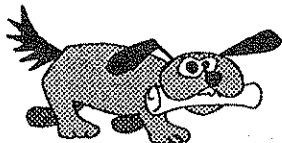
**GENERAL MEMBERSHIP MEETING
 WEDNESDAY ~ 7:30 P.M.
 APRIL 18, 2007
 Next Meeting May 16, 2007
 FRATERNAL ORDER OF EAGLES
 EAST EIGHT MILE ROAD ~ EASTPOINTE, MI
 JUST WEST OF GRATIOT
 ALL FISHERMEN WELCOME!**

Walleye World

The WALLEYE WORLD is the official newsletter of the Lake St. Clair Walleye Association, and welcomes all contributions from the members. These can be news items, articles, photographs, and art-work. We reserve the right to edit material for length, etc. All signed articles appearing in any issue reflect the opinions of the writer and are not necessarily the policy of the organization or its members.

CONSERVATION PLEDGE

I give my pledge as an American to save and faithfully defend from waste the natural resources of my country, it's air, soil and minerals, it's forests, waters and wildlife.



**KEEP THIS PAPER
 COMING
 MAKE SURE YOU PAY
 YOUR DUES**

**REPORT ALL POACHING
 1-800-292-7800**

CALENDER OF EVENTS

APRIL 1, 2007NEW FISHING LICENSES REQUIRED
 APRIL 18, 2007.....GENERAL MEMBERSHIP MEETING
 APRIL 20 - 22, 2007DERBY 1 WEIGH IN AT COMPASS
POINT MARINA IN FAIR HAVEN
 APRIL 21-22, 2007.....MWC EAST TOURNAMENT DETROIT
RIVER & LAKE ERIE
 APRIL 28, 2007WALLEYE AND PIKE SEASON OPENS
ON INLAND WATERS IN LOWER PENNINSULA.
 MAY 11 - 12, 200714TH ANNUAL MUCC DISTRICT 8
WALLEYE TOURNAMENT
 MAY 16, 2007GENERAL MEMBERSHIP MEETING
 MAY 18 - 20, 2007DERBY 2 WEIGH IN AT BLUE WATER
BAIT AND TACKLE IN FAIR HAVEN
 MAY 18 - 20, 2007BLUE WATER CLASSIC
800-255-0508 FOR INFO
 JUNE 20, 2007GENERAL MEMBERSHIP MEETING
 JUNE 22 - 24, 2007DERBY 3 WEIGH IN AT LAKESIDE
FISHING SHOP
 JULY 18, 2007.....GENERAL MEMBERSHIP MEETING
 JULY 20 - 22DERBY 4 WEIGH IN AT PROFESSIONAL
FISHING CENTER
 AUGUST 15, 2007GENERAL MEMBERSHIP MEETING
 AUGUST 17 - 19, 2007DERBY 5 WEIGH IN AT AMVET'S
 AUGUST 19, 2007LSCWA'S SUMMER PICNIC - AMVET'S
 SEPTEMBER 19, 2007GENERAL MEMBERSHIP MEETING

**HOOK ON TO A WINNER
 JOIN THE FASTEST GROWING
 WALLEYE CLUB IN MICHIGAN**

CUT OUT COUPON & MAIL

**APPLICATION FORM
 AND CHANGE OF ADDRESS**

Make check or money order payable to:
 LAKE ST. CLAIR WALLEYE ASSOCIATION
 P.O. BOX 130
 St. Clair Shores, MI 48080
 PLEASE PRINT

CHECK HERE IF THIS IS AN ADDRESS CHANGE

NAME _____

ADDRESS _____

CITY _____ STATE _____ ZIP _____

PHONE _____

- | | |
|---|--|
| <input type="checkbox"/> New Initiation Fee \$10.00 | <input type="checkbox"/> Renewal |
| <input type="checkbox"/> Single Membership \$40.00 | <input type="checkbox"/> Senior Citizens \$30.00
Includes Spouse |
| <input type="checkbox"/> Family Membership \$45.00
Includes Spouse & Children to
16 years | <input type="checkbox"/> Senior Family \$35.00
Includes Spouse &
Grandchildren to 16 years |

Junior \$15.00
 Children up to 16 Years Old

APRIL DERBY

The first LSCWA derby of the 2007 season is already here. Members can start fishing at 6:00 pm Friday, April 20th. Fish can be weighed in starting at 4:00 pm (until 6:00 pm) on Sunday, April 22nd. The weigh-in location is at Compass Point Marina in Fair Haven. See their ad on the back page of this newsletter for the address.

All members are invited to fish the derbies. As a bonus the members with a family membership can enter their kids in the Youth Division. This does not require any pre-registration; just come on down to the weigh-ins. The kids do have a lot of fun when their dad lets them take the Walleye that they caught out of the cooler and place it on the scale. And, it is a blast for the rest of the members as they watch these new comers to fishing having so much fun. Remember to take the kids fishing this summer and bring them down to the derbies.

The derbies are also a good way for the members to meet each other. It is a perfect time to swap fishing tips and advice on lures and presentation. Then there are the stories of the ones that got away and the ones that did not get away. In other words, come on down to the derbies this year even if you did not catch anything that weekend. Join in the fun, have a hot-dog or pizza with the guys, and generally enjoy the afternoon.

Because we are a conservation minded club we do not have the "Team Division" for the April Derby. However, the big fish for the individual member is still the same. The "Team Division" will return and run the rest of the season starting with the May Derby.

SWAP 'N SHOP

By Steve Beasely

This month is our annual Swan 'N Shop meeting. Members can bring down the fishing and outdoor equipment that they no longer need or use. Maybe someone else will need it and a sale or swap will take place. There is a \$10 donation per table for vendors and commercial tackle & lure manufactures

NEW MEMBERS

These are the new members to the club who joined over the past several months. Hopefully, we did not forget anyone. A very warm and heartfelt welcome is extended to all of them.

**Tim Harris • Paul Wiggins • Daryl Lozon • Dan Meyers
William Glazer • Len Bergmoser • Partrick Slomka**

MUCC DERBY

It is hard to believe that it has been this long but it is time for the 14th annual MUCCC District 8 Walleye Tournament. This year the tournament dates are May 11th & 12th. This years event is being hosted by Gilbert's Sportmen's Club in New Haven and the weigh-in and fish fry will be held there. The cost is only \$20 per person. Entry forms and rules will be available at the LSCWA's general membership meeting on April 18th.

Entry forms and more information is also available by calling Stan Bydlos (586-716-7741), Bill Furtaw (810-765-5279), or Bo Soulliere (586-773-3811).

FISHERIES REPORT

The Michigan Department of Natural Resources Fisheries Division has released the Status of the Fisheries of Lake St. Clair 2006 which is this years report. DNR biologists Mike Thomas and Robert Haas (Lake St. Clair Fisheries Research Station) worked on and wrote the report. It is now available on-line and a link to it is available on the club's message board. Below is a quote from the report.

FISHERY FORECAST FOR 2007

Annual variation in reproductive success of walleye and yellow perch can result in substantial year to year changes in the abundance of these species. Harvestable-size yellow perch abundance will be about the same as last year in Lake Erie and Lake St. Clair, with strong contributions from the 2001 and 2003 year classes. Although walleye abundance will decrease in 2007, the average size of walleye available for anglers will be larger. The 2003 year class is expected to again dominate the walleye fishery in the connecting waters and Lake Erie. As a result, walleye anglers will find walleye numbers lower, but average size larger this year. Muskie and bass numbers tend to remain more stable from year to year and both species should continue to provide excellent fishing opportunities in 2007, particularly in Lake St. Clair and the Detroit River. However, weather conditions can affect sport fishing success as much as fish abundance. Therefore it is difficult to predict fishing success. Water levels are forecasted to be slightly higher this year, but remaining below the long term average. Thus shallow waters may continue to restrict angler access to some fishing areas in the connecting waters. "

- Boat & Trailer Storage
- Winterizing & Shrink-wrap
- On Site Parts & Supply Store
- LIVE BAIT



- Marine Repair & Maintenance
- Dockside Service Available
- 24-Hour Emergency Calls
- Authorized Yanmar Dealer

547 Lyncaste
P.O. Box 15176
Detroit, MI 48215

313-824-1982

NEW BAIT SHOP- MINNOWS & CRAWLERS
1 BLOCK EAST ST JEAN RAMP
OPEN 5:30am SATURDAY & SUNDAY
6:00am MONDAY - FRIDAY

OUTBOARD MOTORS



CANNON



DAINOROTA



AUTHORIZED SERVICE CENTER
Stocking a Full Line of Parts

- MOST REPAIRS DONE THE SAME DAY -

COASTLINE POWER & LIGHTING
810-794-5951

7 STEPS TO MAXIMIZE YOUR SONAR'S PERFORMANCE

By Keith Krych

Sonar is an abbreviation for SOUND NAVIGATION and Ranging.

It was developed by the US Military to find and track submarines during WWII. Sonar does only one thing; it measures the DISTANCE from the transducer to objects in the water and/or the bottom by using sound waves.

Using your sonar properly is the quickest way to becoming a more successful angler. Here are seven steps to properly set up any sonar on any boat.

1. Install the Transducer Properly!!! This is the most frequent problem I see with not getting the maximum out of your system.
2. Turn the unit from automatic to Manual Mode... NO FISH ID Please!!!
3. Set the Depth Range .. maximize the pixels you paid for!
4. Adjust Sensitivity until "snow" or black dots appear on the screen. About 70% on my unit in 20 fow. Shallower = less, deeper = more.
5. Set the Gray Line also to about 70%; this will enable you to tell large fish from smaller ones and also tell the bottom type (hard, soft, weeds).
6. Set Chart Speed to maximum. This lets you see objects better at high speed.
7. Set Ping Rate to Maximum. This also lets you see objects better at high speeds.

Transducer Installation-the most common problems with sonar performance.

When I talk to fishermen who are having trouble getting a good reading with their sonar unit, particularly at high speed, the most common problem is a poor transducer installation. Nothing can affect your sonar's performance as much as a poorly installed/placed transducer. It must be level with the transom and mounted in a smooth water flow area, 1/8 inch below the bottom of the hull. The bottom surface of the transducer needs to be parallel to the waterline, not in line with the bottom of the hull. Keep the transducer clear of hull strakes and rows of rivets. Hull strakes and rivets will cause air bubbles and water turbulence that interfere with the transducer signal when you're on plane. Also remember to keep the

transducer at least 18" to either side of the main engine.

Fish I.D.

The problem with fish ID is you're letting the computer tell you what is beneath your boat instead of looking at it yourself. The computer is preset to show a fish when a certain amount of signal is sent back; even if that signal is from a group of weeds, debris, insects, or a group of baitfish. Another problem is fish sizing. An example is if two fish enter your sonar's cone - one is a 7" perch and the other a 4 lb walleye. The problem comes if the perch is directly in the center of the cone and the walleye just barely touches the outer edge of the cone. With Fish ID on it will show the perch (because it is giving the stronger return) as a large fish symbol while the walleye will show as a small or medium symbol.

Depth Range

The problem with sonar in auto depth range mode is they are programmed to think you're always going deeper. If you're in the river and your depth is 32 feet of water most sonar units automatically jump to a deeper depth range, say 60 feet. You're losing the ability to see objects (fish) because half your screen is below the bottom of the river. Set the depth range yourself and get all the definition you paid for.

Sensitivity

High sensitivity settings are needed to determine bottom type, see small targets, and separate targets (fish). On a B&W unit turn the sensitivity up until your screen has looks like its snowing. If you have a color unit turn the sensitivity up until it looks like a blizzard.

Grayline/Colorline

Grayline/Colorline allows us to determine how hard the bottom below our boat is. Second, grayline lets us see if an object that is close to the bottom is actually connected to the bottom (structure) or not connected (fish). Lastly, and probably most important for walleye fishermen, is that grayline let us actually separate bottom hugging fish from the lakes/river's bottom.

Chart Speed

Turning up the chart speed to max will enable you to spot fish while you're cruising. If the chart speed is too slow you could run over a pod of fish without even knowing they were there.

Ping Rate

Turning up the ping rate will also help you to spot more fish while running above trolling speed. The faster you're traveling across the water's surface, the more distance is between the signals (the ping) of the sonar. Turning up the ping rate will shorten the distance and enable you to see more of what's under your boat.

Now that your sonar unit is set properly go use it "Let's go fishing!"

Certified **Captain Jerry's** *Mobile*
Insured



Marine Service
SPECIALIZING IN

OUTDRIVES ELECTRICAL WINTERIZING	Deliveries <i>(100 Ton Licensed Master Captain)</i>	ENGINES DIESEL OIL CHANGES
--	--	----------------------------------

EMAIL: captjerrys48023@HOTMAIL.COM

Phone: (586) 855-3606 Fax: (586) 725-6711

RECIPE SECTION

by Alex Vitek

Back by popular demand is the recipe collection. Here is a recipe for Salmon that I just came across. It is time to clean out the freezer to make room for the Walleye. This recipe will give us something to do with that fall caught Salmon that is taking up valuable space.

GARLIC SALMON

1 1/2 pounds salmon fillet
salt and pepper to taste
3 cloves garlic, minced
1 sprig fresh dill, chopped
5 slices lemon
5 sprigs fresh dill weed
2 green onions, chopped

Preheat oven to 450 degrees F (230 degrees C). Spray two large pieces of aluminum foil with cooking spray. Place salmon fillet on top of one piece of foil.

Sprinkle salmon with salt, pepper, garlic and chopped dill. Arrange lemon slices on top of fillet and place a sprig of dill on top of each lemon slice. Sprinkle fillet with chopped scallions.

Cover salmon with second piece of foil and pinch together foil to tightly seal. Place on a baking sheet or in a large baking dish.

Bake in preheated oven for 20 to 25 minutes, until salmon flakes easily.

Since the recipe calls for scallions here is the Question & Answer:

Q. What are "scallions"?

A. Scallions are most commonly referred to as green onions in the United States. They are a variety of young onions with a long, thin white base that has not yet developed into a bulb and long straight green stalks that look like giant chives. Both the white base and the green stalks are commonly eaten.

Scallions have a milder flavor than mature onions, but a bit stronger than chives. The tops of these green onions may be used as a substitute for chives in many recipes.

Although scallions (green onions) may be cooked, either whole or chopped, they are perhaps most enjoyed fresh as in salads, as a crudite or as a last minute topper for sauces.

FIXING HOLES IN FIBERGLASS BOATS

By Dave Wilemski

When I moved a few things around on the deck of my fiberglass Sea Swirl to make room for my new Minnkota Electric Bow Mount I ended up with 7 holes to patch.

It is not as difficult as I expected. The biggest problem is that you have to buy and make up enough stuff for maybe 40 holes. So I would suggest if you try this then trailer your boat over to a friends boat that also has holes to fix and do both at the same time.

West Marine has a white based "Marine-Tex" repair kit that comes in a 2 ounce size. It "handles like putty, hardens like steel and sands like wood". Read the detailed directions on this Epoxy Putty and you cannot go wrong. Other marine dealers also carry this and similar products

You require Acetone or Lacquer thinner to prep the area. Also 60-80 grit emery cloth. I recommend tinting the putty first to get it close to the color of your hull.

Next you want to paint the area. West Marine has a Gel Coat Finish Kit in white color in a pint size that worked just fine. I bought a tube of Brown pigment to turn the white into light beige to match my hull color. The Gel Coat also has an epoxy hardener that must be added.

For spraying I bought the Preval Spray gun kit which is no more than a can of compressed air that you screw onto a small measuring bottle. After thinning out the mixture with acetone it sprayed just fine. I had to mix 10 times more than required to get the job done but with an investment of \$54.00 I have enough left over to fix any new scratches that may happen this year.

TRADE-A-TRIP

By Dave "FISH 7 ON" Wilemski

We have 33 members going to St. Joseph/Benton Harbor the first weekend in May to catch lots of Salmon. Sorry, we are all filled up and cannot add anymore names. Everyone will have a boat w/Captain. Some changes to "requests" have been made. I should have the final list at the April meeting. Just so everyone who signed up knows, the guys from the Battle Creek Steelheaders have already asked me to pass on that it looks like a banner year. They have been going out and many of them have been limiting out. Get that All Specie license now!

Six (6) of you going have not paid your \$5.00 up front fee for the fishing contest and token fish boil contribution. Bob Barnes will be calling you about this soon. All must be paid now (NOT later).

Figure an average fuel bill of \$50.00 per day per boat. Adjust to suit. Divide by the number of guests and please pay for ALL the gas your Captain burns up for the weekend.

Also, it would be nice if each guest crew chips in to buy the captain a gift... Say a LSCWA hat or shirt. See Dave Champine at the meeting for suggestions.

Finally, get your All Species (Salmon) Michigan fishing license before you go. Do not wait until the last minute while everyone is trying to get onboard their boat for a day of fishing.

APPOINTMENT OF NEW VP

from Geogg Regulski, President

Over the last month Bob Bretheaur found out that his work schedule had become very hectic and demanding. Because of the number of hours involved he felt that it would be best for the club if he resigned his position as Vice-President. He just would not be able to devote the amount of time that he wanted to helping the club.

At the Board of Directors meeting in March Dave Wilemski was appointed to fill the position of Vice-President until the uncoming general election. This meant that Don Murray, the first alternate elected last year, moved into the BoD position left vacant when Dave became V-P.

LOCAL TOURNAMENT ACTION

By Steve Beasley

At this month's meeting we will be looking at the most recent walleye tournaments and the results. We will be able to look at how our various members have fared.

We will also be look at some upcoming walleye events and have some video. So come on down this coming Wednesday and hear about some good walleye fishing action and hotspots. See you at the meeting and bring a friend along too!

By the way, at the May meeting the Border Patrol will try to attend to explain the I-68, the Nexus Card, and the upcoming passport requirements.

POND REPORT

by Dave Marcelewski

Our ponds were filled on March 27, 28, and 29th. With the new, and often fatal, fish virus in the Great Lakes the Michigan DNR has halted all fish plantings that use fry from the Great Lakes and connecting waters.

For maintenance reasons the ponds were filled and in a way it is business as usual just minus the fish. We

filled the ponds to prevent wild willow trees and shrubbery from invading. If the water had not been pumped in then the willows and other wild trees would have quickly taken over the bottom areas of the ponds. To remove these shrubs and trees we would have had to gather a very large crew to cut and pull out this woody growth; or paid to rent a brush hog. With the water pumped in willows and other trees would not grow.

This year the weather did not co-operate and we had a real chore on our hands. The strong east winds blew all the floating debris on the lake towards shore and into the inlet for the pumps. This caused the filter screens to become plugged up. We would have to clean these screens several times each hour. This would mean shutting the pumps down and the filling of the ponds becomes a longer than usual process.

Now the ponds are filled and our spring chores are done. The pond crew can relax and maybe go out and catch a few fish.

We are still going to plan on having a fish fry for the people who have volunteered their time and energy to keeping the ponds maintained. The maintenance crew on the Selfridge ANG Base has always been there whenever we need anything. Whether it is lending us a tractor or helping to fix the pumps the Selfridge grounds crew was there to help. A big thank you goes out to Richard "Cookie" Koch, Joanne Koch, and Ralph Bolund. Thanks to these people the ponds are filled and maintained for the start of another season.

APRIL FISHING FUN & DERBY

By Dave "FISH 7 ON" Wilemski

"There's a fine line between fishing and just standing on the shore like an idiot." --Steven Wright.

To that I ask...If you are going fishing for this April Derby and have room in your boat for another single fellow member please see me early during the April meeting (or call me at home before hand).

Also, If you would like to go fishing but do not have a boat or your boat is not running please see me early during the April meeting (or call me at home before).

I will try to pair you up for the betterment of our Club. My cell phone is 586-292-6143.

HARBOR HILL MARINA ST. JEAN BOAT RAMP

Tired of hauling your boat around? Safely store it on the trailer at Harbor Hill Marina. One launch per day at St. Jean Ramp included. Call for pricing. 313-331-6880

Ramp Hours: 5 am - 9 pm (during April)
Ramp Phone: 313-824-4952



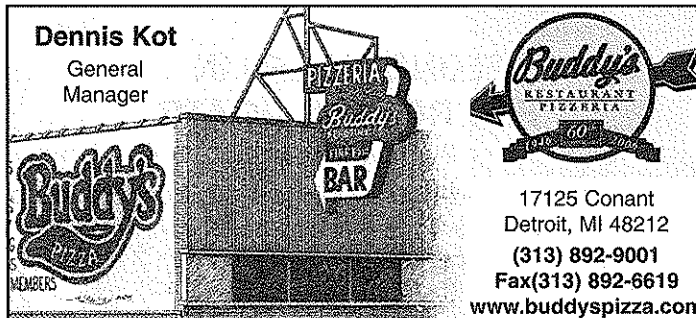
810-560-9415

Grosso Trucking & Supply

10015 Marine City Hwy.
Fair Haven, MI 48023

STEVE
(586) 725-2935
Fax (586) 725-4153

Dennis Kot
General
Manager



17125 Conant
Detroit, MI 48212
(313) 892-9001
Fax(313) 892-6619
www.buddyspizza.com



P.O. BOX 88
Port Austin, MI
48467

(989) 738-5600

Fax: (989) 738-5820



FISHING LICENSES
ICE SHANTY RENTAL
&
SHUTTLE SERVICE

BLUE WATER BAIT & ACC.

LIVE BAIT • TACKLE

(586) 725-1448
GARY & LYNN
GRZECH

NEXT TO DNR
PUBLIC LAUNCH

8089 DIXIE HWY.
SUITE E
FAIR HAVEN, MI 48023



RAM'S HORN HARPER

36830 Harper

Clinton Township, MI 48035



*Made From Scratch
Country Cooking*
STEVE PANCOTTO

18051 MACK • DETROIT, MI 48224
(313) 881-8414



America

Each Office Independently Owned and Operated

George R. Latchney

ASSOCIATE BROKER
REAL ESTATE CONSULTANT

30935 Utica Rd.
Roseville, MI 48066
Phone: (586) 772-7400
Fax: (586) 445-0139
Cell: (586) 944-7330

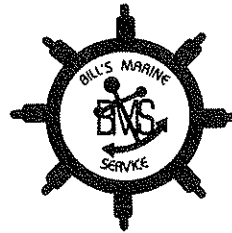


Wilson Marine

Ron Wilson

6095 W. Grand River
Brighton, MI 48114
www.wilsonboats.com
ronwilson@wilsonboats.com

517-546-3774
800-875-2620
Fax: 517-546-2157



BILL'S MARINE

- Marine Repair Of All Types
- Boat Hauling • Shrink Wrap
- Refinishing • Complete Restoration
- Complete Wood & Fiberglass Repair

Ask for BILL

(810) 794-4552

ANGLER ROD & SPORTS

BIRDFEEDERS & SEED • GARDEN RELATED ITEMS • TACKLE
LIVE BAIT • ARCHERY PRO SHOP • ROD AND REEL REPAIR

OPEN 7 DAYS A WEEK

1426 Oakland Ave. (M-29)
St. Clair, MI 48079

810-329-2253
Don & Linda Reilly

(810) 794-1810

STATE & FEDERAL
LICENSED



PAUL BURCZYCKI
4566 Pte. Tremble (M-29)
Algonac, MI 48001

CERTIFIED SCALE
OLD WORLD CRAFTSMANSHIP
NEW WORLD TECHNIQUES

STONETHROW BED & BREAKFAST

50 Pinery Lane
Box 100

Jackson Point Ont. L0E 1L0
website: stonethrowbb.com



Gail & Brent Monument 905-722-5557
Phone # 1-888-668-5557

Established 1947
DEE'S MARINE
Sales & Service
Service After The Sale
www.deesmarine.com



20344 S. Nunneley (16 Mile at Groesbeck Hwy.)
Clinton Township, Michigan 48035
PH. (586) 790-9100 • FAX (586) 790-0172

10% OFF WITH THIS AD



Reconditioned Appliances
Parts • Sales • Service
New Mattresses & Furniture

DAVE CHAMPINE

Service Manager
(586) 601-8457

Warren
13007 E. 8 Mile
(586) 775-1110
Mon. - Sat. 8 - 7

Warren
5741 E. 8 Mile
(586) 757-4333
Mon. - Sat. 10 - 7



(586) 792-2560
Fax: (586) 792-8731

RING & PINION SHOP

"Put Your Rear End In Our Hands"

36180 Groesbeck Hwy.
Sales and Service Clinton Twp., Michigan 48035

Compass Pointe Marina

(586) 725-3011 • Fax: (586) 725-3933 • Toll Free: (800) 465-5800
8709 Dixie Hwy., Fair Haven, MI 48023
Website: www.CompassPointeMarina.com

LUND	Sugar Sand
Honda Marine	Yamaha
Triton Boats	Century
Mercury	Cobia



Res.: 586.776.2325
Cell: 586.246.0317



Jim's Handyman Service

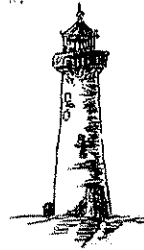
* PAINTING INTERIOR-EXTERIOR
* TILE WORK * CARPENTRY * YARD WORK
* MOST MINOR REPAIRS
* ALL WORK GUARANTEED



Saginaw Bay Walleye Club Michigan Walleye Tour

P.O. Box 1595
Bay City, MI 48706

www.saginawbaywalleyeclub.com



BEACON LIGHT

Home Inspections

David Wilemski
Certified Home Inspector

586-292-6143

P.O. Box 577 • New Baltimore, MI 48047



Tackle ~ Live Bait
Electronics

Store Phone: (586) 469-2070
Hotline: (586) 469-2050

PROFESSIONAL FISHING CENTER

Complete Line of Fishing Tackle
Discount Prices

Owner
Capt. Steve Jones

36257 Jefferson
(1-1/2 Blocks South of Crocker)
Mt. Clemens, MI 48045

LAKESIDE FISHING SHOP

"YOUR ONE STOP FISHING SHOP"

Visit us online @ www.lakesidefishingshop.com

25110 Jefferson

Corner 10 Mile & Jefferson

(586) 777-7003

Hours: M-F: 7-8 Sat: 7-6 Sun: 7-5

American • Canadian • Walpole Licenses Available

All
T-Shirts
20% OFF

w/coupon only
expires- 5-16-07

15% OFF
All
Harnesses

w/coupon only
expires- 5-16-07

10% OFF
Any Rod &
Reel Combo

w/coupon only
expires- 5-16-07

Free Doz.
Worms w/
\$15 Purchase

w/coupon only
expires- 5-16-07
w/LSCWA Membership Card

FISHING REPORT (586) 777-7008

E-mail: info@lakesidefishingshop.com